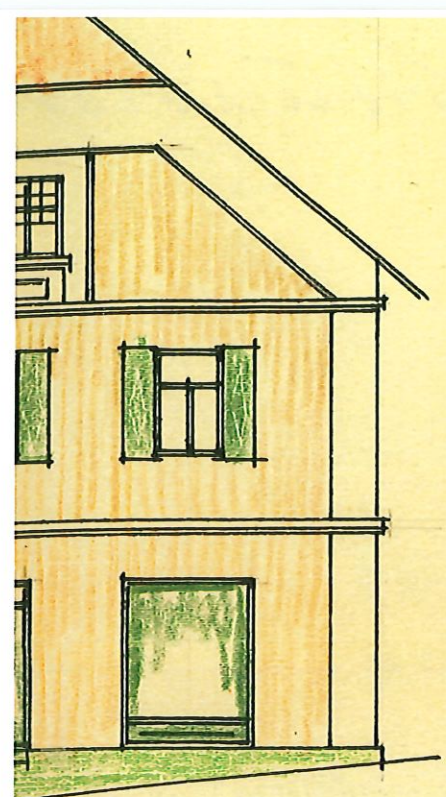
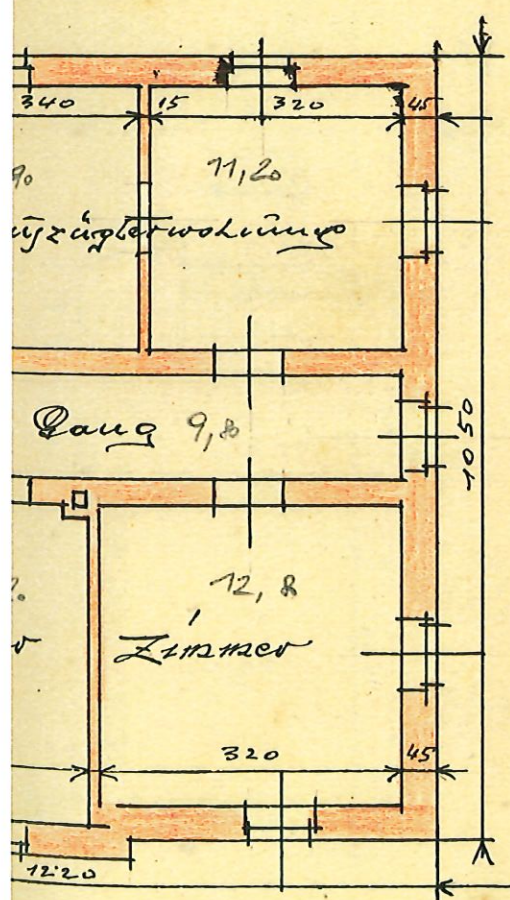


Situation 1:2880



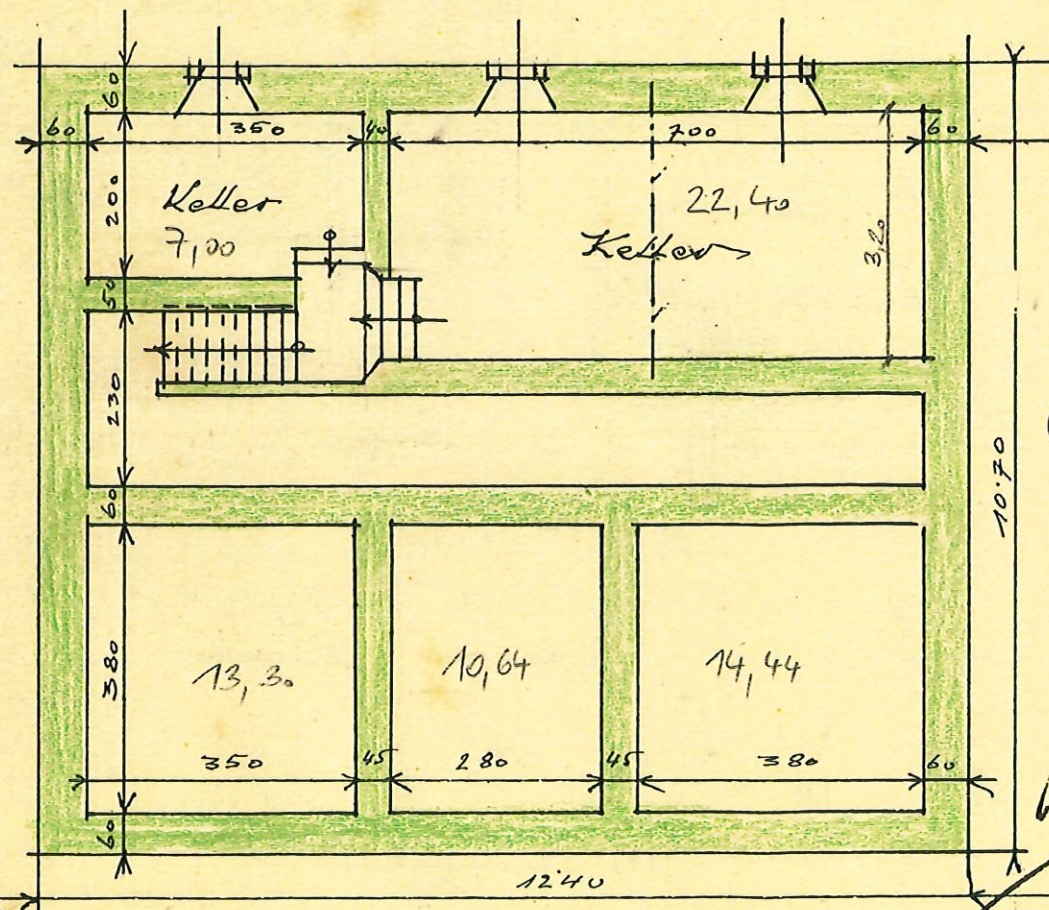
ck



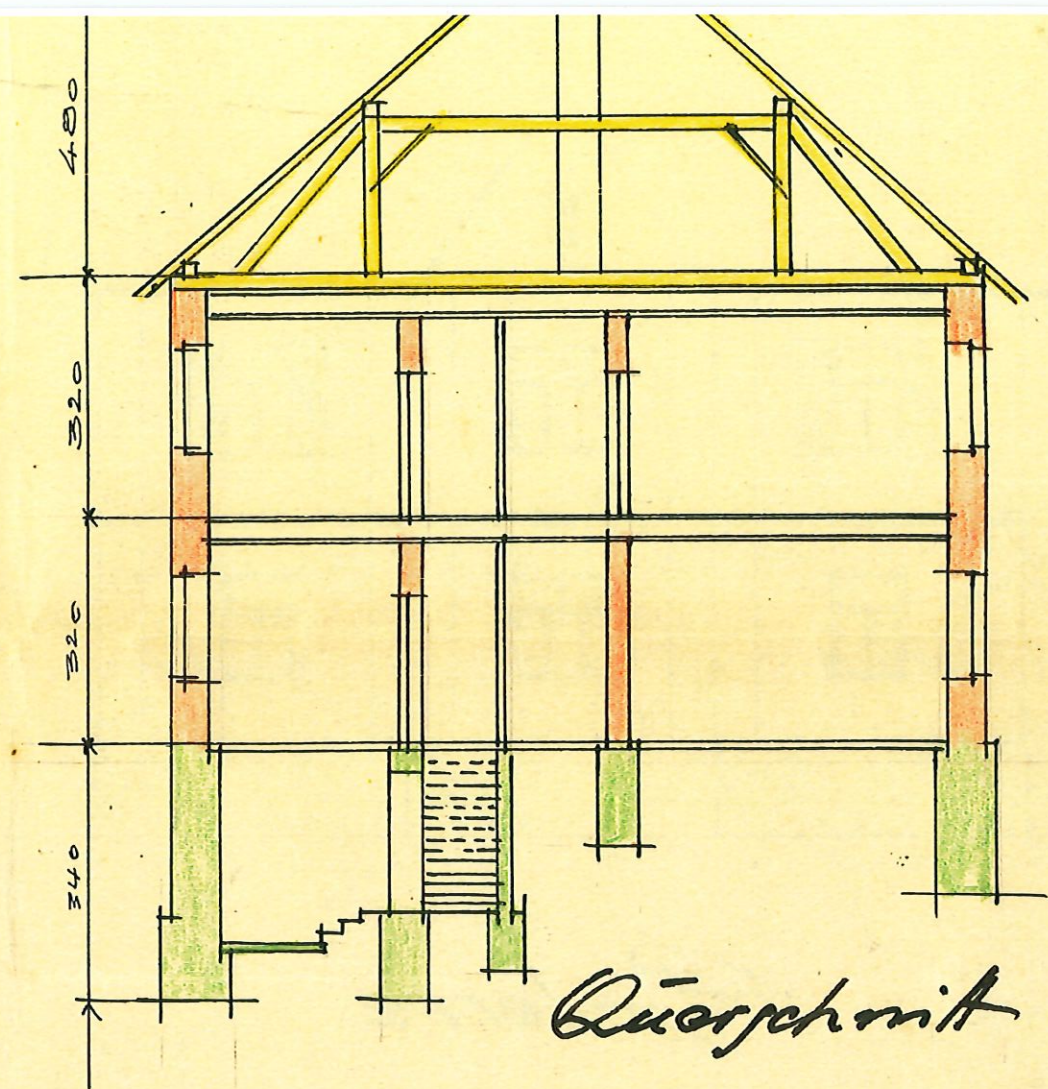
Schmidbauer
Ingenieur



Keller



Lohm Götting Maurermeister



Querschnitt

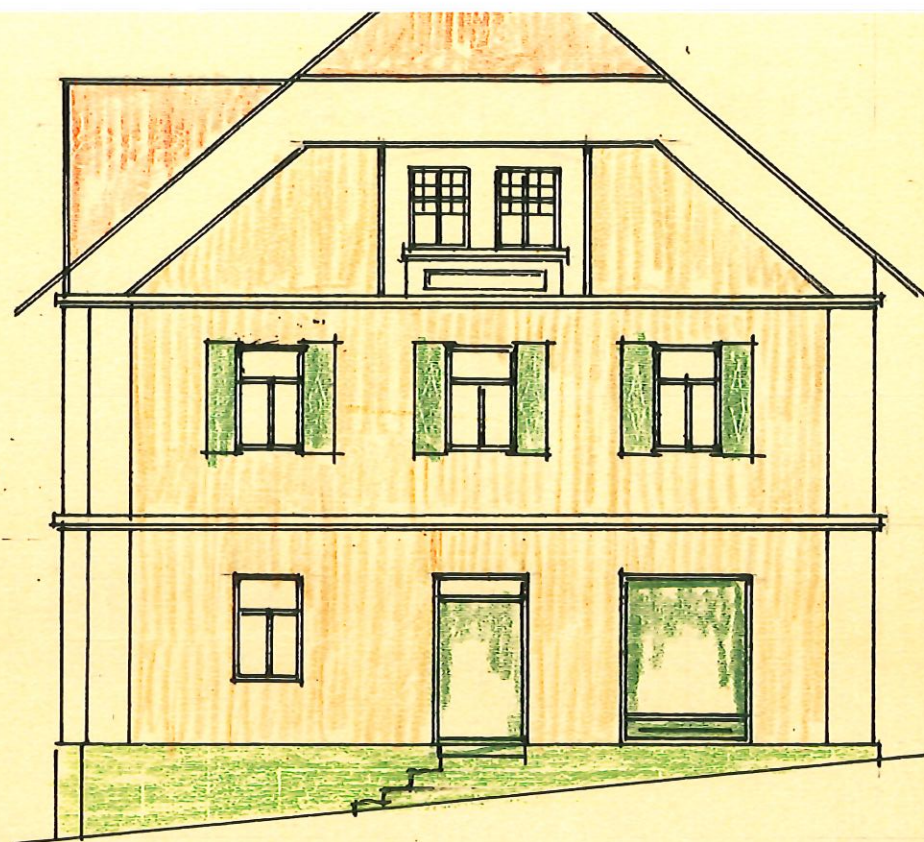
Maßstab 1:100 @

Andorf, 15.9.925,

MAURERMEISTER
ALOIS SCHWENDINGER
ZEMENTWAREN-ERZEUGUNG
BAUMATERIALIEN-HANDLUNG
ANDORF: OB.-ÖST.
TELEPHON NR. 13 INTERURB.

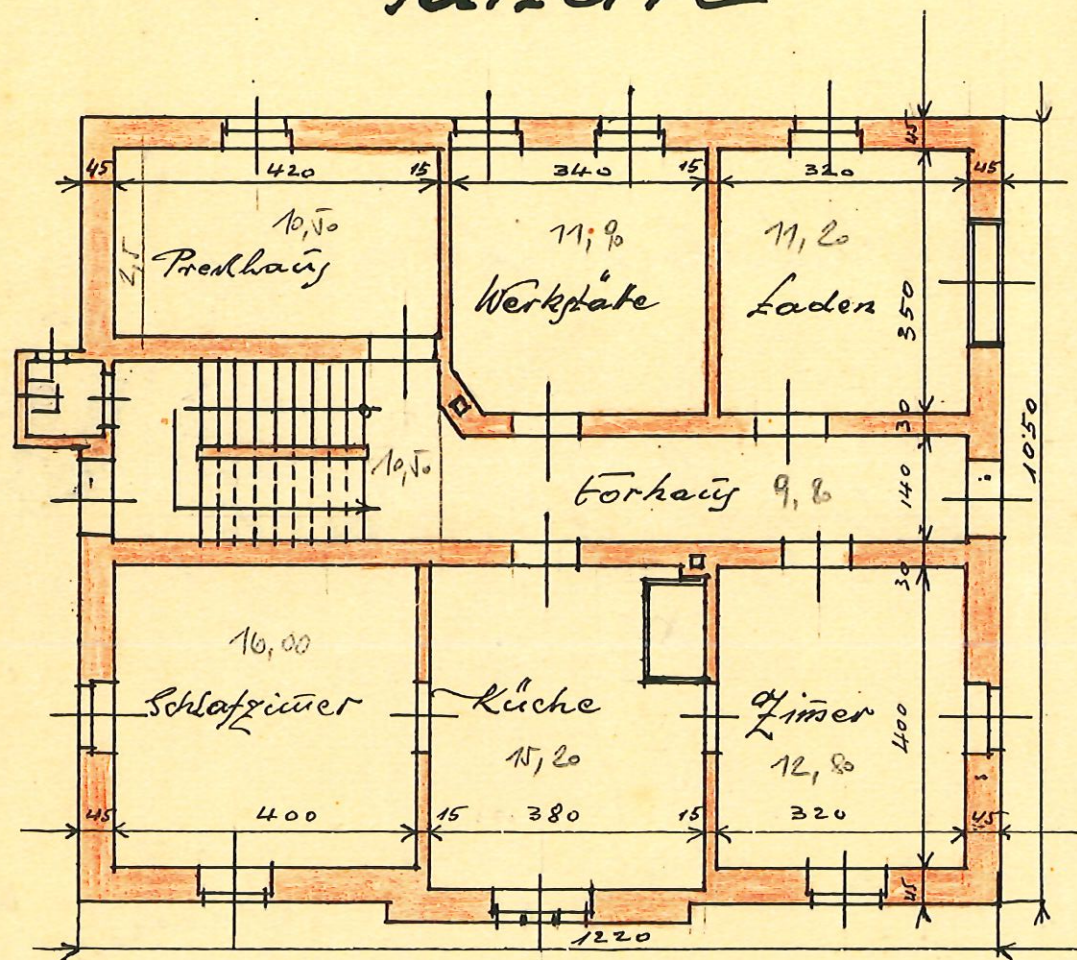
Plot
Schwendinger Bau



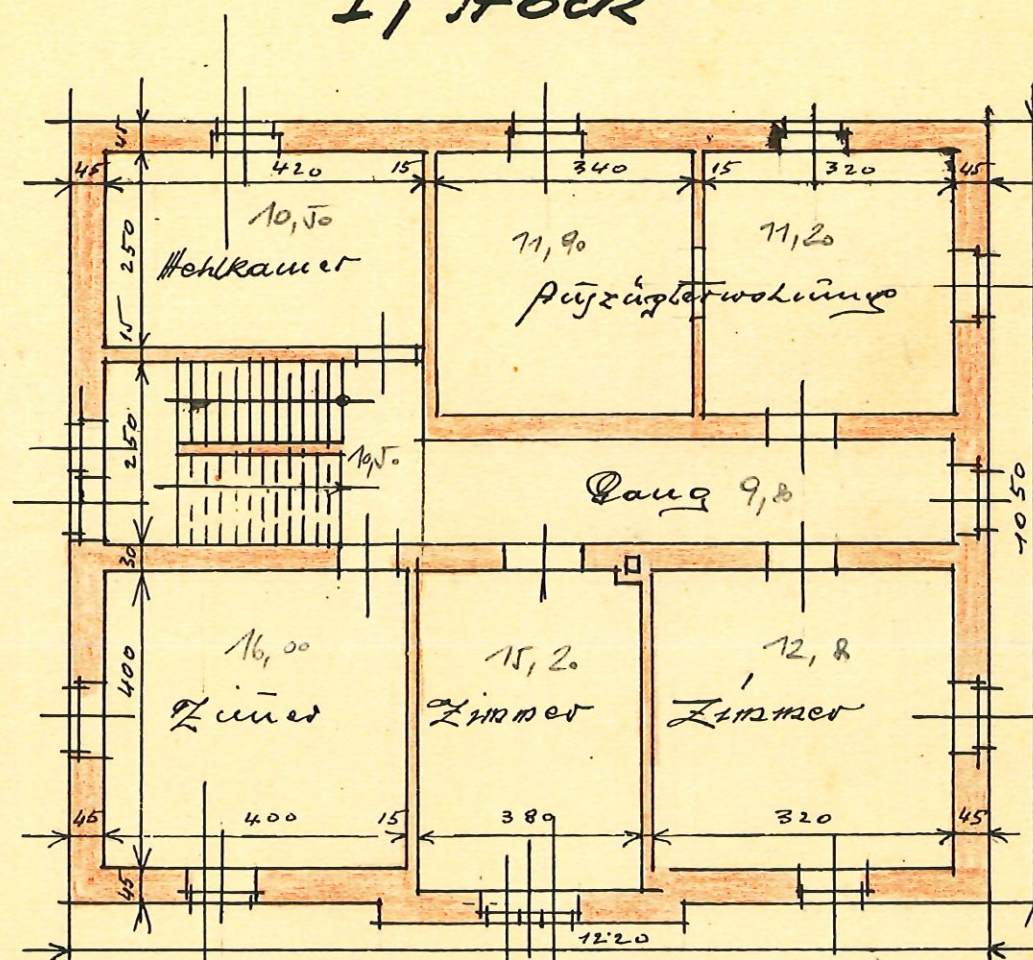


Situation

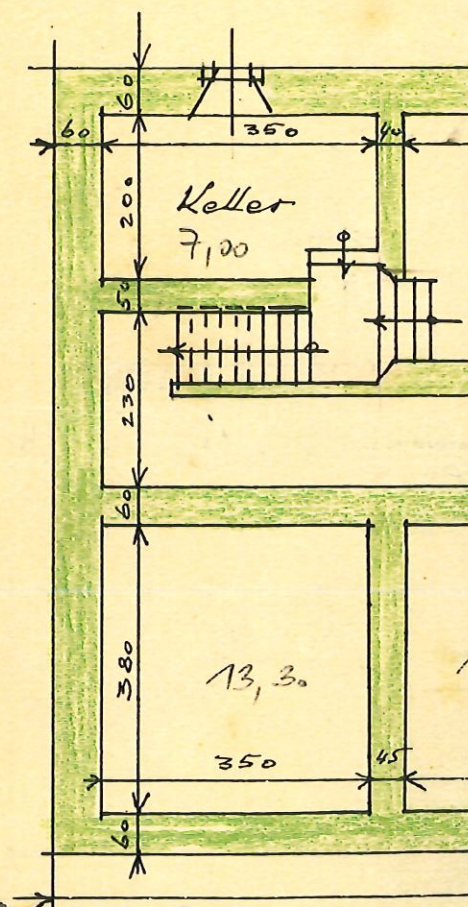
Parterre



I. Stock



Keller



Anton Schmidbauer
Lingensweiler



Lohmeyer